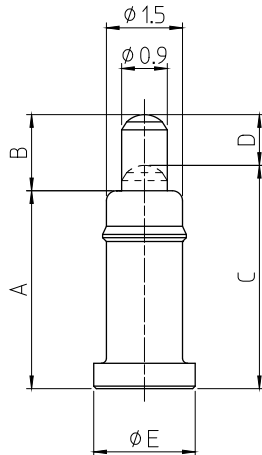


Pogo Pin Connectors_1Pin_SMD Vertical Series

Basic Specification

Rated Current :	0.5A
Rated Voltage :	AC/DC12V
Contact Resistance:	200mΩmax
Operation Temp. :	-40°C~+85°C
Pin Strength :	9.8N force on pin from any direction for 1min.
Cycle Durability:	20,000 times



Reference Land Pattern

Type (Dim.A B)	Working Height(m m)	Reference Working Range (mm)	Spring Force	Rated Cyrrent	Dim.(mm)						Part Number
					A	B	C	D	E	F	
2307	2.5	(2.4 - 2.65)	0.3N	0.5A	2.3	(0.7)	(2.5)	(0.5)	1.8	2.4	T-2307PL-1-00-0000
2509	2.8	(2.6 - 2.95)	0.3N	0.5A	2.5	(0.9)	(2.8)	(0.6)	1.8	2.4	T-2509PL-1-00-0000
2809	3.1	(2.9 - 3.25)	0.3N	0.5A	2.8	(0.9)	(3.1)	(0.6)	1.8	2.4	T-2809PL-1-00-0000
2910	3.2	(3.0 - 3.4)	0.3N	0.5A	2.9	(1.0)	(3.2)	(0.7)	1.8	2.4	T-2910PL-1-00-0000
3111	3.4	(3.2 - 3.65)	0.3N	0.5A	3.1	(1.1)	(3.4)	(0.8)	1.8	2.4	T-3111PL-1-00-0000
3212	3.5	(3.3 - 3.8)	0.3N	0.5A	3.2	(1.2)	(3.5)	(0.9)	1.8	2.4	T-3212PL-1-00-0000
3413	3.8	(3.5-4.05)	0.3N	0.5A	3.4	(1.3)	(3.8)	(0.9)	2.0	2.6	T-3413PL-1-00-0000
3614	4.0	(3.7-4.3)	0.3N	0.5A	3.6	(1.4)	(4.0)	(1.0)	2.0	2.6	T-3614PL-1-00-0000
3915	4.4	(4.0-4.65)	0.3N	0.5A	3.9	(1.5)	(4.4)	(1.0)	2.0	2.6	T-3915PL-1-00-0000
4215	4.7	(4.3-4.95)	0.3N	0.5A	4.2	(1.5)	(4.7)	(1.0)	2.5	3.1	T-4215PL-1-00-0000
4617	5.2	(4.7-5.45)	0.3N	0.5A	4.6	(1.7)	(5.2)	(1.1)	2.5	3.1	T-4617PL-1-00-0000
5117	5.7	(5.2-5.95)	0.3N	0.5A	5.1	(1.7)	(5.7)	(1.1)	2.5	3.1	T-5117PL-1-00-0000
5517	6.1	(5.6-6.35)	0.3N	0.5A	5.5	(1.7)	(6.1)	(1.1)	2.5	3.1	T-5517PL-1-00-0000
5920	6.6	(6.0-6.9)	0.3N	0.5A	5.9	(2.0)	(6.6)	(1.3)	2.5	3.1	T-5920PL-1-00-0000
6220	6.9	(6.3-7.2)	0.3N	0.5A	6.2	(2.0)	(6.9)	(1.3)	2.5	3.1	T-6220PL-1-00-0000
6520	7.2	(6.6-7.5)	0.3N	0.5A	6.5	(2.0)	(7.2)	(1.3)	2.5	3.1	T-6520PL-1-00-0000
7025	7.8	(7.1-8.25)	0.3N	0.5A	7.0	(2.5)	(7.8)	(1.7)	2.5	3.1	T-7025PL-1-00-0000
7525	8.3	(7.6-8.75)	0.3N	0.5A	7.5	(2.5)	(8.3)	(1.7)	2.5	3.1	T-7525PL-1-00-0000

Pogo Pin Connectors_1Pin_SMD Vertical Series

Electrical Characteristic

Rated Current : AC/DC 12V 0.5A
Contact Resistance : 200m Ω

Mechanical Characteristics

Pin Force : 0.3N \pm 0.1N
Pin Strength : 9.8N force on pin from any direction for 1 min.

Other Characteristic

Plating thickness : Pin Plating thickness 0.3 μ m
Operational Durability : 20,000 cycles
Low Temp. Durability : Store in temp -40 $^{\circ}$ C \pm 3 $^{\circ}$ C for 96 hrs, then leaves in the ambient temperature for 1 hour.

High Temp. Durability : Store in temp +85 $^{\circ}$ C \pm 2 $^{\circ}$ C for 96 hrs, then leaves in the ambient temperature for 1 hour.

Humidity Durability : Store in temp +60 $^{\circ}$ C \pm 2 $^{\circ}$ C with humidity of 90 to 95% for 96 hrs, then leaves in the ambient temperature for 1 hour.

Temperature Cycle Test : Cycle 5 times (Table 1 shows test condition for 1 cycle). Leave in the ambient temp for 1 hour.

Temperature And Humidity Cycle Test : Operate cycle test 10 times.(Fig 1) Then leave in the ambient temp for 1 hour. The other issues are in conformity to JIS C60068-2-38.

Anti-corrosion(salt water spray) : The electrical performance shall be measured after continuous spray of salt water with 5 \pm 1% density and 35 \pm 2 $^{\circ}$ C temperature for 48 hours, cleaning with lukewarm water and dry, and leaving in ambient temperature for 1 hour.

Vibration Test : Connect each connector pin in series, conducting current of 0.1A. After that, the vibration described below is added.
* Amplitude 1.5mm
* Sweeping cycle 10~55~10Hz/minute,
* Duration of test : 2hrs for each of X,Y,Z axis

Shock Test : Connect each connector pin in series, conducting current of 0.1A. After that , the shock described below is added.
* Accelerating rate: 490m/s²
* Operating time of the test: 11ms
* The number of operating times: *3shocks at X,Y,Z axis both in negative and positive direction.

Heat Resistance : The electrical performance shall be measured in ambient temperature after soldering in accordance with the reflow profile Fig. 2.

Pogo Pin Connectors_1Pin_SMD Vertical Series

Table 1. Temperature Cycle

Step	Temperature(°C)	Time(minites)
1	-40 ± 3	30 - 35
2	5 - 35	10 - 15
3	85 ± 2	30 - 35
4	5 - 35	10 - 15

Fig 1. Temp. and Humidity Cycle

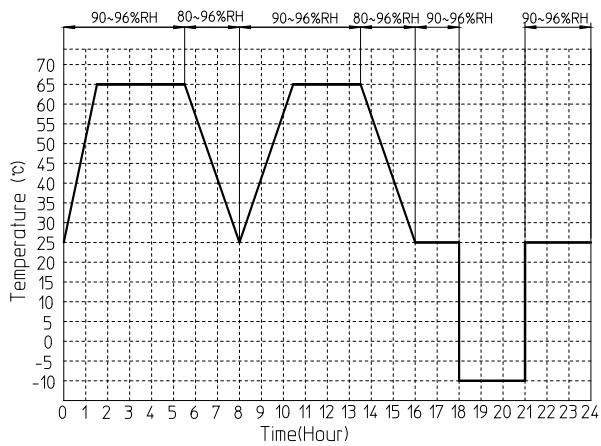
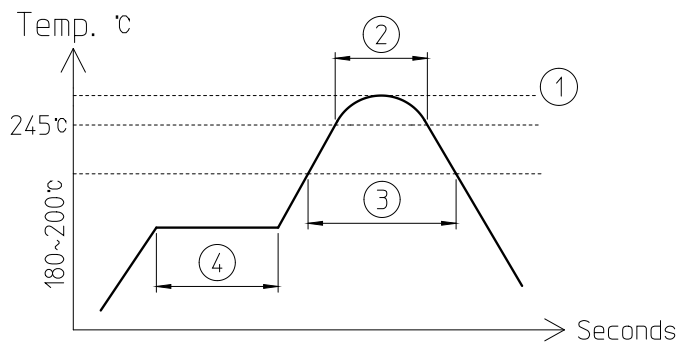


Fig 2. Reflow Profile



- ① **MAX Temp.250°C** ② **Peak time (245°C):10sec.MAX**
 ③ **220°C time:80sec.** ④ **190°C ± 10°C time:120sec. ± 30sec.**

- The specifications shown in this catalogue are subject to change without notice.
- Storage conditions: 35days max in room temperature